

SISCO

P/T PLUGS

TEST

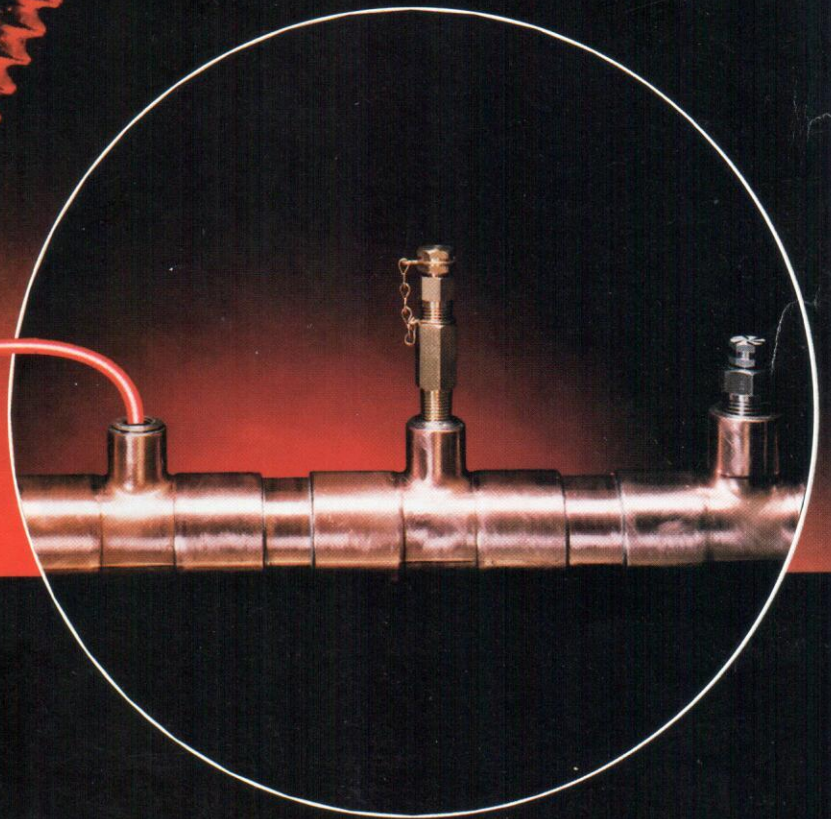
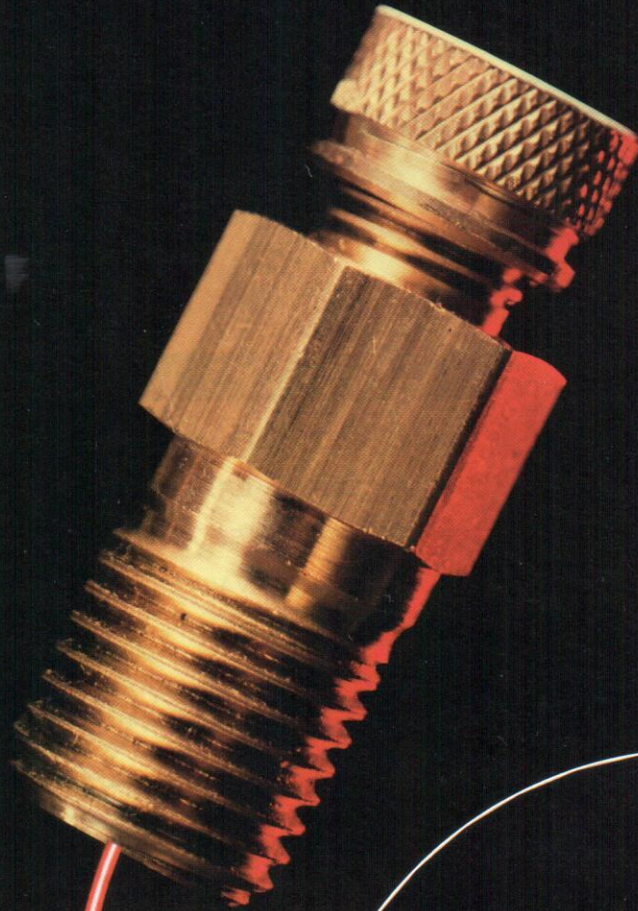
PLUGS

FOR

PRESSURE

OR

TEMPERATURE



SISCO

DUAL SEAL CORE



WHY A SISCO PLUG?

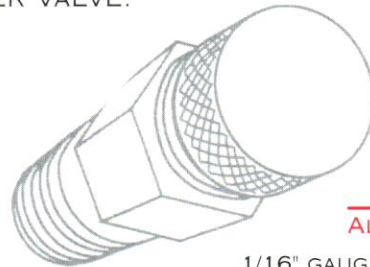
ZERO LEAKAGE TO 1000 PSIG

OUR DUAL CORE SEAL DESIGN WITH THE MEMBRANE COUPLER SERVES A DUAL PURPOSE...

- DUAL CORE DESIGN ALLOWS THE BOTTOM SEAL TO CLOSE, SEALING YOUR SYSTEM BEFORE THE PROBE IS FULLY REMOVED THROUGH THE TOP CORE.
- THE MEMBRANE CONNECTING THE TWO SEPARATE CORES MAINTAINS TRUE ALIGNMENT FOR INCREASED EASE WHEN INSERTING PROBES.

SISCO'S 1/8" MINI PLUG

THIS SISCO PLUG WAS CREATED AT THE REQUEST OF OUR CUSTOMERS FOR USE WHERE SPACE IS CONSTRAINED. USE ANYWHERE YOU CAN USE A 1/8" NPT SCHRADER VALVE.



ALSO AVAILABLE

1/16" GAUGE ADAPTER FOR TRIDICATOR TO TAKE FULL RANGE PRESSURE AND TEMPERATURE READINGS.

SISCO PLUGS ARE UNIQUE

UNIQUE IDEAS FOR USING A SISCO PLUG...

- INJECT OR EXTRACT SUBSTANCES FROM LINES WHILE IN OPERATION
- BLEED AIR OR GASES
- SEPARATE EXTENSION: YOU CAN USE THE SAME TEST EQUIPMENT ON PLUGS WITH EXTENSIONS... "OUR CORE IS ALWAYS AT THE TOP."
- MEASURE FLOW RATES:

POSITION ONE PLUG ON EACH SIDE TO BE TESTED. DETERMINE PRESSURE VARIANCE BY SUBTRACTING THE DOWNSTREAM READING FROM THE UPSTREAM READING. PRESSURE DIFFERENTIAL CAN BE USED TO DETERMINE FLOW RATE.

TEST PLUG WITH PLASTIC CAP RETAINER AND EXTENSION



DESCRIPTIONS OF SISCO PLUGS AND ACCESSORIES

DESCRIPTIONS

NUMBER	SIZE NPT	BODY/CAP MATERIAL	PLUG CORE	MAX. TEMP.
BNO-125	1/8"	BRASS	NORDEL	350°
BNE-250	1/4"	BRASS	NEOPRENE	200°
BNO-250	1/4"	BRASS	NORDEL	350°
SSNE-250	1/4"	S/S	NEOPRENE	200°
SSNO-250	1/4"	S/S	NORDEL	350°
BNE-375	3/8"	BRASS	NEOPRENE	200°
BNO-375	3/8"	BRASS	NORDEL	350°
BNE-500	1/2"	BRASS	NEOPRENE	200°
BNO-500	1/2"	BRASS	NORDEL	350°
SSNE-500	1/2"	S/S	NEOPRENE	200°
SSNO-500	1/2"	S/S	NORDEL	350°

DEZINC BRASS AVAILABLE - CONSULT FACTORY

ACCESSORIES AND GAUGE ADAPTERS

PC-250	1/4"	PLASTIC	CAP RETAINER
PC-375	3/8"	PLASTIC	CAP RETAINER
PC-500	1/2"	PLASTIC	CAP RETAINER
BTX-250	1/4" M/F	NPT BRASS	EXTENSION 1 3/4"
BTXX-250	1/4" M/F	NPT BRASS	EXTENSION 2 3/4"
BTXXX-250	1/4" M/F	NPT BRASS	EXTENSION 4 3/4"
BTX-500	1/2" M/F	NPT BRASS	EXTENSION 1 3/4"
GA-063	1/16"	S/S	PROBE
GA-125	1/8"	S/S	PROBE
GA-125S	1/8"	S/S	SHORT PROBE

GAUGES

2 1/2" OR 3 1/2" DIAL FACE - 1/4" NPT MALE	
MODEL	RANGE
2 1/2" DIA. G2-30	3 1/2" DIA. —
G2-60	—
G2-100	G3-100
G2-160	—
G2-200	—
	0-30 PSI
	0-60 PSI
	0-100 PSI
	0-160 PSI
	0-200 PSI

THERMOMETERS

1" OR 2" DIAL FACE - 5" STEM WITH EXTERNAL CALIBRATION		
MODEL	RANGE	
1" DIA. T-125	2" DIA. —	25° to 125° F
T-160	TX-160	-40° to 160° F
T-220	TX-220	0° to 220° F
T-500	—	50° to 500° F

THERMOCOUPLE THERMOMETER WITH DIGITAL READOUT -50 TO 1000° F AND RIGID PROBE = .063". THIS SPECIAL THERMOMETER CAN MEASURE TEMPERATURE IN 1/8" TEST PLUG.

TEST KITS

MODEL	CASE	2 1/2" GAUGE	3 1/2" GAUGE	GA	THERMOMETERS
TK 1-2-5	1	1	—	1	2
TK 2-2-5	1	2	—	2	2
TK 1-3-5	1	—	1	1	2
TK 2-3-5	1	—	2	2	2

(1) T-220 AND (1) T-500 SUPPLIED STANDARD UNLESS OTHER RANGES REQUESTED.

ENGINEERING SPECIFICATIONS FOR HYDRONIC APPLICATIONS

A. INSTALL A SISCO 1/4" (1/8", 3/8", 1/2" NPT OR BSP)

TEST PLUG OF SOLID BRASS (STAINLESS STEEL OR DEZINC BRASS) INTO APPROPRIATELY SIZED WELDED SOCKET, THREADED BOSS, VALVE OR VESSEL. PLUGS SHALL BE LOCATED PER PROJECT DRAWINGS. TEST PLUG SHALL HAVE A DUAL SEAL CORE OF NORDEL, GOOD UP TO 350° F FOR WATER, (OR NEOPRENE TO 200° F FOR NATURAL GAS*) AND SHALL BE RATED ZERO LEAKAGE FROM VACUUM TO 1000 PSIG. PLUG SHALL BE CAPABLE OF RECEIVING A PRESSURE OR TEMPERATURE PROBE.

FOR 1/4" (3/8" OR 1/2" NPT OR BSP) TEST PLUG ONLY

B.1 OWNER SHALL BE PROVIDED WITH ONE (1) MASTER TEST KIT. KIT SHALL CONTAIN ONE OR TWO 2 1/2" OR 3 1/2"

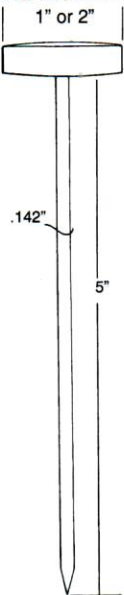
PRESSURE GAUGES OF SUITABLE RANGE, ONE OR TWO GAUGE ADAPTER(S) 1/8" O.D. PROBE(S) AND TWO 5" STEM POCKET TESTING THERMOMETERS CONSISTING OF ONE 0-220° F, AND ONE 50-550° F IN A STURDY CUSTOM CARRYING CASE.

FOR 1/8" NPT (OR BSP) TEST PLUG ONLY

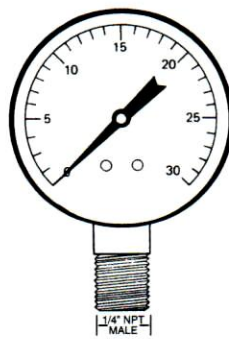
B.2 OWNER SHOULD BE PROVIDED WITH MASTER TEST KIT. KIT SHALL CONTAIN ONE OR TWO 2 1/2" OR 3 1/2" PRESSURE GAUGE(S) OF SUITABLE RANGE, ONE OR TWO GAUGE ADAPTER(S) GA-063 THAT HAVE 1/16" O.D. AND A STURDY CARRYING CASE. TEMPERATURE READINGS ARE NOT APPLICABLE WITH THIS KIT. IF YOU NEED TO TAKE TEMPERATURE READINGS WITH THESE PLUGS, PLEASE CALL THE FACTORY!

*FOR APPLICATIONS OTHER THAN WATER, CONSULT THE FACTORY.

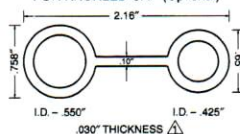
THERMOMETER



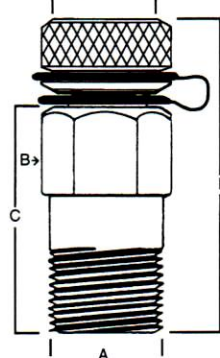
2 1/2" OR 3 1/2" DIAL FACE PRESSURE GAUGE



PLASTIC CAP RETAINER FOR KNURLED CAP (Optional)

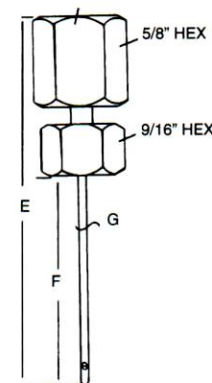


TEST PLUG 9/16" HEX



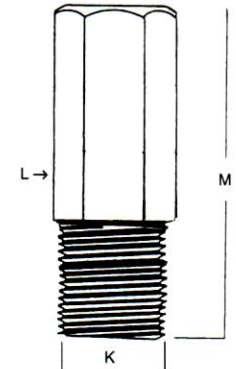
A	B	C	D
1/8" NPT	9/16" HEX.	13/16"	1 1/4"
1/4" NPT	9/16" HEX.	1 1/16"	1 1/2"
3/8" NPT	5/8" HEX.	1 1/16"	1 1/2"
1/2" NPT	7/8" HEX.	1 1/16"	1 1/2"

GAUGE ADAPTOR 1/4" NPT Female



MODEL	E	F	G
GA-063	2 3/4"	1 3/4"	.063"
GA-125	2 3/4"	1 3/4"	.125"
GA-125S	2 1/4"	1 1/4"	.125"

NPT EXTENSION BRASS



MODEL	K	L	M
BTX-250	1/4" NPT	9/16" HEX.	1 3/4"
BTXX-250	1/4" NPT	9/16" HEX.	2 3/4"
BTXXX-250	1/4" NPT	9/16" HEX.	4 3/4"
BTX-500	1/2" NPT	7/8" HEX.	1 3/4"