



G2 SERIES INTRINSICALLY SAFE

A full line of **FLOMEC® G2 Series Turbine Meters** are available in a variety of housing materials. Rugged and dependable, the G2 Series offers:

- Stainless Steel for most water and chemical products
- Aluminum for fuels and petroleum-based products
- PVDF for aggressive chemicals

FEATURES / BENEFITS

- Meter is designed for thin fluids < 100 cP
- Modular design allows for use with Output Modules, Sensors and Remote Display Kits
- 2 Totals (Batch Total = Resettable, Total = Non-Resettable); Rate of Flow, Factory calibrated in gallons or litres. Field calibratable. Includes non-volatile totals.
- High accuracy meter
- Internal parts are simple to replace for easy maintenance
- AAA Alkaline battery life: 2 years

PRODUCT CONFIGURATION

1 PRODUCT IDENTIFIER:

G2 = Industrial Grade Flowmeters

2 TURBINE MATERIAL:

S = Stainless Steel
A = Aluminum
P = PVDF (1/2 in. y 1 in. only)
X = Electronics only (For metal meters)
Z = Electronics only (For plastic meters)

3 TURBINE SIZE:

05 = 1/2 in. **15** = 1-1/2 in.
07 = 3/4 in. **20** = 2 in.
10 = 1 in.

4 FITTING TYPE:

N = NPT (Female)
I = ISO (Female) BSPT (ISO 7 Designation is RC)
F = 150# ANSI Flange (Available on S10, S15 & S20 only)
T = Tri-Clamp Fitting (Available on S05, S07, S10, S15 & S20 only)
X = No Turbine Body

5 ELECTRONIC CHOICE:

Computer Display, Meter Mounted
Q9 = Q9 2-Button Computer
Q1 = Q9 2-Button Computer, Vertical Mount (90° Adapter)
Retrofit Computer Kit (Display Only)
R9 = Q9 2-Button Computer Retrofit Kit (Replaces 09 Display)
No Electronics - Turbine Only
XX = No Electronics - Turbine Only

6 CALIBRATION OF COMPUTER / DISPLAY:

GM = Gallons Per Minute (Gallons Default)
LM = Liters Per Minute (Litres Default)
GD = Gallons Per Minute (Gallons Default) with NIST Certificate
LD = Liters Per Minute (Litres Default) with NIST Certificate
XX = No Calibration

7 PACKAGING:

A = 05 Thru 10 Turbines, Turbine Only or w/Q9 Electronics
 05 Thru 20 Electronics Only (Q9 Replacement Kit or R9
 Retrofit Kit)
B = 15 & 20 Turbines, Turbine Only or w/Q9 Electronics
 05 Thru 10 Turbines w/Q1 Electronics
C = 15 Thru 20 Turbine w/Q1 Electronics
D = 10 Turbines with ANSI Flange Turbine Only or w/Q9, Q1
 Electronics
E = 15 & 20 Turbines with ANSI Flange Turbine Only or w/Q9, Q1
 Electronics

APPLICATIONS

- Batching
- Blending
- Water
- Industrial fluids
- Plating solutions
- Ammonium
- Food and beverage processing
- Fuel Products
- Monitoring clean fluids
- Plant process water
- Chemical feed lines
- Harsh chemicals (sulfuric acid and bleach)
- DEF (Diesel Exhaust Fluid)

1 2 3 4 5 6 7

---->>>> G2 S 15 N Q9 GM B



SPECIFICATIONS

Fitting Type:	NPT or ISO (Female) BSPT (ISO 7 designation is RC)				
	150# ANSI (S10, S15 y S20 only)				
	Tri-Clamp (Stainless Steel only) - Fitting size is one size bigger than meter size				
Meter Sizes Available:	1/2"	3/4"	1"	1-1/2"	2"
Corresponding Tri-Clamp Fitting:	3/4"	1"	1-1/2"	2"	2-1/2"
Housing Material:	316 Stainless Steel, Aluminum, PVDF				
Flow Range:	1/2" (05)	1 - 10 GPM		(3.8 - 38 L/min)	
	1/2" (05) PVDF Only	1.2 - 12 GPM		(4.5 - 45 L/min)	
	3/4" (07)	2 - 20 GPM		(7.6 - 76 L/min)	
	1" (10)	5 - 50 GPM		(19 - 190 L/min)	
	1-1/2" (15)	10 - 100 GPM		(38 - 380 L/min)	
	2" (20)	20 - 200 GPM		(76 - 760 L/min)	
Accuracy (% of Reading):	Turbine Only		Turbine w/Computer		
	1/2" (05)	± 2.0%		± 1.5%	
	3/4" (07)	± 1.5%		± 1.0%	
	1" (10)	± 1.5%		± 1.0%	
	1-1/2" (15)	± 1.0%		± 0.75%	
	2" (20)	± 1.0%		± 0.75%	
Repeatability:	± 0.1% (PVDF is ± 0.3%)				

DIMENSIONS NOTE: Q9 Display adds 0.72 in. (18 mm) to height

Stainless Steel Models

	S05, 1/2 in.	S07, 3/4 in.	S10, 1 in.	S15, 1 1/2 in.	S20, 2 in.
A = Height	1.4 in. (35.6 mm)	1.6 in. (40.6 mm)	1.9 in. (48.3 mm)	2.6 in. (66.0 mm)	3.1 in. (78.7 mm)
B = Width	2.0 in. (50.8 mm)	2.0 in. (50.8 mm)	2.0 in. (50.8 mm)	2.7 in. (68.6 mm)	3.4 in. (86.4 mm)
C = Length	4.2 in. (106.7 mm)	4.3 in. (109.2 mm)	4.5 in. (114.3 mm)	5.3 in. (134.6 mm)	6.3 in. (160.0 mm)

Aluminum Models

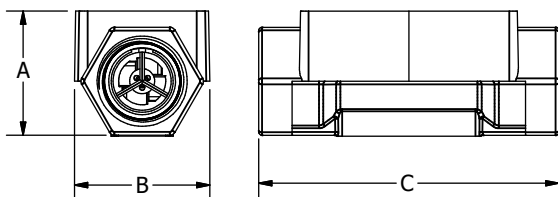
	A05, 1/2 in.	A07, 3/4 in.	A10, 1 in.	A15, 1 1/2 in.	A20, 2 in.
A = Height	1.8 in. (45.7 mm)	2.0 in. (50.8 mm)	2.2 in. (55.9 mm)	2.8 in. (71.1 mm)	3.2 in. (81.3 mm)
B = Width	2.0 in. (50.8 mm)	2.0 in. (50.8 mm)	2.0 in. (50.8 mm)	2.7 in. (68.6 mm)	3.3 in. (83.8 mm)
C = Length	4.2 in. (106.7 mm)	4.3 in. (109.2 mm)	4.5 in. (114.3 mm)	5.3 in. (134.6 mm)	6.3 in. (160.0 mm)

PVDF Models

	P05, 1/2 in.	P10, 1 in.
A = Height	3.2 in. (81.3 mm)	3.3 in. (83.8 mm)
B = Width	2.1 in. (53.3 mm)	2.8 in. (71.1 mm)
C = Length	7.3 in. (185.4 mm)	8.1 in. (205.7 mm)

NOTE: For representation purpose only. Actual product models vary in shape, design, etc

ANSI Flange and Sanitary Flange dimensions not shown. For those dimensions, please refer to product manuals or our website FLOMEcmeters.com.

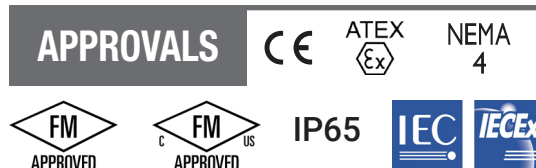


Pressure Rating:		
Stainless Steel 316 SS	1,500 psi (102 bar)	
Aluminum	300 psi (21 bar)	
ANSI Flange 316 SS	Flange Rule	
Sanitary Flange 316 SS	Limited by fitting, clamp size, & temperature	
PVDF	100 psi (6.9 bar)	
Operating Temperature Range:	-40° F to 250° F (-40° C to 121° C)	
	(PVDF) -20° F to 180° F (-28° C to 82° C)	
with Intrinsically Safe Display:	0° F to +129° F (-18° C to +54° C)	
Typical K-Factor:	1/2" (05)	2,500 PPG (660 Pulses/L)
	3/4" (07)	1,100 PPG (291 Pulses/L)
	1" (10)	565 PPG (149 Pulses/L)
	1-1/2" (15)	215 PPG (57 Pulses/L)
	2" (20)	100 PPG (26 Pulses/L)
Wetted Materials:	Housing:	316 Stainless Steel or Aluminum
	Bearings:	96% Alumina Oxide Ceramic
	Shaft:	Tungsten Carbide
	Rotor:	PVDF
	Rings:	316 Stainless Steel
Wetted Materials PVDF:	Housing:	PVDF (15% Carbon Fiber Filled)
	Bearings & Shaft:	98% Alumina Ceramic
	Rotor:	PVDF
	Rings:	Fluorocarbon (Optional PTFE)
	Frequency Range:	1/2" (05)
3/4" (07)		37-370 Hz @ 2-20 GPM (7.6-76 L/min)
1" (10)		47-470 Hz @ 5-50 GPM (19-190 L/min) / 45-475 Hz @ 5-50 GPM (19-190 L/min) (PVDF)
1-1/2" (15)		36-360 Hz @ 10-100 GPM (38-380 L/min)
2" (20)		33-330 Hz @ 20-200 GPM (76-760 L/min)
Calibration Report:	Comes standard with G2 Series meters.	
	N.I.S.T. - Certification available.	

ACCESSORIES

Part No.	Description	Part No.	Description
120077-01	FM Approved Sensor	113275-10	FM Approved Remote Kit
120077-02	ATEX Approved Sensor	125206-2	1/2 in. Teflon O-Ring for PVDF Meter (2)
125260-02	90° Display Adaptor Kit	125206-1	1 in. Teflon O-Ring for PVDF Meter (2)

APPROVALS



ISO 22241-2 Annex C, D, E, F, G, H, I, Diesel Exhaust Fluid (DEF)/Adblue standards

Wichita · Sydney

GREAT PLAINS INDUSTRIES



Service & Warranty: For technical assistance, warranty replacement or repair contact your **FLOMEC®** or **GPI®** distributor: In North or South America: **888-996-3837 / FLOMEcmeters.com**
Outside North or South America: **+61 2 9540 4433 / FLOMEcmeters.com**