

HiTemp140-FP

High Temperature Data Logger with a Flexible RTD Probe

The HiTemp140-FP is a durable, user friendly high temperature data logger featuring a long, flexible RTD probe with a narrow diameter, making it ideal for use in steam sterilization and lyophilization processes. Commonly used for mapping, validation and monitoring of high temperature surfaces and environments, this stainless steel data logger is available in several models. The flexible probe is coated with PFA insulation and can withstand temperatures up to 260 °C. *The body of the logger cannot exceed 140 °C.* The HiTemp140-FP probe design is narrow and lightweight making it ideal for placement within small vials, tubing, test tube and other small diameter or delicate applications.

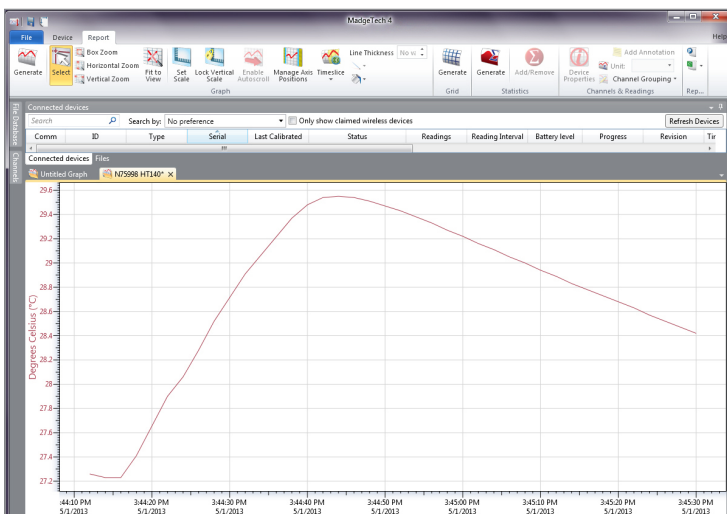
Using the latest MadgeTech Software, starting, stopping and downloading the HiTemp140-FP is simple and easy. To use, simply place the HiTemp140-FP in the IFC400 or IFC406 docking station (sold separately). Using the software, an immediate or delay start can be chosen, as well as the reading interval. Start the data logger, remove it from the docking station and the device is ready to be deployed. Graphical, tabular and summary data is provided for analysis and data can be viewed in °C, °F, K or °R. The data can also be automatically exported to Excel® for further calculations.



Features

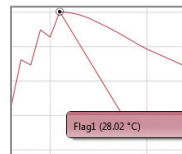
- ±0.1 °C (± 0.18 °F) Accuracy
- Probe Measurement Range -200 °C to +260 °C (-328 °F to +500 °F)
- Operating Environment -40 °C to +140 °C
- Submersible (IP68)
- User-Replaceable Battery
- Durable
- Programmable Start and Stop Time
- Five probe lengths: 6, 12, 24, 36 and 72 inches
- Battery life indicator

MadgeTech 4 Software Features

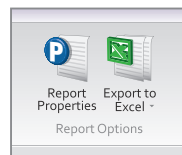


Graph View

- Multiple graph overlay
- Statistics
- Digital calibration
- Zoom in/ zoom out
- Lethality equations (F0, PU)
- Mean Kinetic Temperature
- Full time zone support
- Data annotation
- Min./Max./Average lines
- Summary view



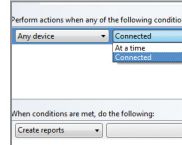
Cooling Flags



Export to Excel

Time	Time Zone	Delta
1:13:37 PM	0400	-00:00:00
1:14:37 PM	0400	-00:00:00
1:15:37 PM	0400	-00:00:00
1:16:37 PM	0400	-00:00:00
1:17:37 PM	0400	-00:00:00
1:18:37 PM	0400	-00:00:00
1:19:37 PM	0400	-00:00:00
1:20:37 PM	0400	-00:00:00
1:21:37 PM	0400	-00:00:00
1:22:37 PM	0400	-00:00:00
1:23:37 PM	0400	-00:00:00
1:24:37 PM	0400	-00:00:00
1:25:37 PM	0400	-00:00:00

Tabular Data View



Automation

Benefits

- Simple Setup and Installation
- Minimal Long-Term Maintenance
- Long-Term Field Deployment

Applications

- Autoclave Verification and Mapping
- Lyophilization
- Monitoring High-Temperature Surfaces
- Container Mapping
- Measurements Inside Small Vials and Tubing

SPECIFICATIONS

Specifications are subject to change without notice. Specific warranty remedy limitations apply. Call (603) 456-2011 or go to madgetech.com for details.

TEMPERATURE	
Temperature Sensor	Flexible RTD Probe
Probe Measurement Range	-200 °C to +260 °C (-328 °F to +500 °F) BODY OF LOGGER CANNOT EXCEED 140 °C
Temperature Resolution	0.01 °C (0.02 °F)
Calibrated Accuracy	±0.1 °C from +20 °C to +140 °C ±0.3 °C from -20 °C to +19.99 °C ±0.4 °C from -40 °C to -20.01 °C

GENERAL	
Start Modes	Software programmable immediate start Delay start up to 18 months in advance
Stop Modes	Manual or Timed (specific date and time)
Data Logger Response Time	In Air In Water
	(hours : minutes : seconds : fractions of a second)
	t ₆₀ - 00:00:30:00 t ₆₀ - 00:00:03:50 t ₉₀ - 00:01:10:00 t ₉₀ - 00:00:06:50
Trigger Settings	High and Low limits may be set. Once data meets or exceed sets limits, the device will record to memory. Bi-level start and stop triggers can also be programmed. Users can specify the number of readings to take after the device triggers
Memory	32,256 readings
Readings in Trigger Settings Mode	6,451 readings
Real Time Recording	May be used with PC to monitor and record data in real time
Password Protection	An optional password may be programmed into the device to restrict access to configuration options. Data may be read out without the password

Wrap Around	Yes
Reading Rate	4 readings per second up to 1 reading every 24 hours
Calibration	Digital calibration through software
Calibration Date	Automatically recorded within device
Battery Type	3.6V high-temperature lithium battery included; user replaceable
Battery Life	1 year typical (1 minute reading rate at 25 °C / 77 °F)
Data Format	Date and time stamped °C, K, °F or °R
Time Accuracy	±1 minute/month at 25 °C Extended Operation: ±20 minutes/month at 140 °C (±450 ppm)
Computer Interface	IFC400 or IFC406 USB docking station required; 125,000 baud
Operating System Compatibility	Windows XP SP3 or later
Software Compatibility	MadgeTech Standard Software version 4.2.1.1 or later MadgeTech Secure Software version 4.2.0.1 or later
Operating Environment	-40 °C to +140 °C (-40 °F to +284 °F) 0 %RH to 100 %RH, 0.002 PSIA to 100 PSIA
IP Rating	IP68
Dimensions (Body)	2.95 in x 0.97 in x 0.97 in (75 mm x 24.6 mm x 24.6 mm)
Dimensions (Probe)	HiTemp140-FPST-6: 6 in x 0.13 in (152 mm x 3.2 mm)
	HiTemp140-FPST-12: 12 in x 0.13 in (305 mm x 3.2mm)
	HiTemp140-FPST-24: 24 in x 0.13 in (609 mm x 3.2mm)
	HiTemp140-FPST-36: 36 in x 0.13 in (914 mm x 3.2mm)
	HiTemp140-FPST-72: 72 in x 0.13 in (1829 mm x 3.2 mm)
Weight	3 oz (85 g)
Material	Body: 316 Stainless Steel, Radel Probe: PFA Insulated Cable with Stainless Steel Tip
Approvals	CE

BATTERY WARNING: FIRE, EXPLOSION, AND SEVERE BURN HAZARD. DO NOT SHORT CIRCUIT, CHARGE, FORCE OVER DISCHARGE, CRUSH, PENETRATE, OR INCINERATE. BATTERY MAY LEAK OR EXPLODE IF HEATED ABOVE 150 °C (302 °F).

Ordering Information

HiTemp140-FPST-6	PN 902330-00	High Temperature Data Logger with a 6 inch Flexible Probe and Stainless Steel Tip
HiTemp140-FPST-12	PN 902312-00	High Temperature Data Logger with a 12 inch Flexible Probe and Stainless Steel Tip
HiTemp140-FPST-24	PN 902364-00	High Temperature Data Logger with a 24 inch Flexible Probe and Stainless Steel Tip
HiTemp140-FPST-36	PN 902313-00	High Temperature Data Logger with a 36 inch Flexible Probe and Stainless Steel Tip
HiTemp140-FPST-72	PN 902316-00	High Temperature Data Logger with a 72 inch Flexible Probe and Stainless Steel Tip
HiTemp140-FPST-6-KR	PN 902339-00	High Temperature Data logger with a 6 inch Flexible Probe and Stainless Steel Tip with Key Ring
HiTemp140-FPST-36-KR	PN 902336-00	High Temperature Data logger with a 36 inch Flexible Probe and Stainless Steel Tip with Key Ring
IFC400	PN 900319-00	Docking Station with USB Cable
IFC406	PN 900325-00	6 Port, Multiplexer Docking Station with USB Cable
ER14250-SM Formerly ER14250MR-145	PN 900097-00	Replacement Battery for the HiTemp140-FP

For Quantity Discounts call (603) 456-2011 or email sales@madgetech.com